

Ascend

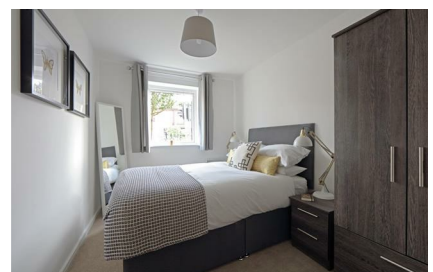
Built on higher standards



4C Petal Court Manchester M28 3YN

- Allocated parking space
- Secure-By-Design windows and doors
- Fitted wardrobes to master bedroom
- Dishwasher
- Fridge freeze
- Washing/drying machine
- Oven and hob
- Light caramel carpet in the bedrooms
- Grey full length curtains in the living room

£910 PCM

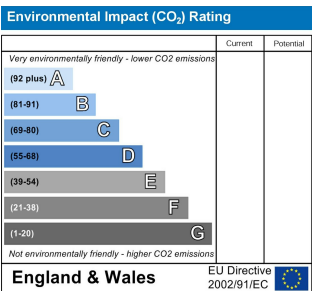
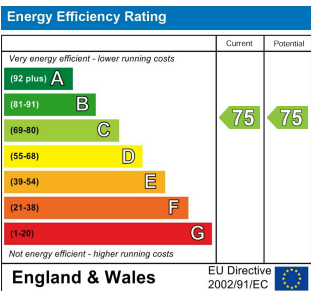


Welcome to DifRent homes at Heyfields. Located in Walkden, Heyfields is an impressive new development of 66 family homes and 72 apartments, 7 miles from Manchester city centre. Set in a picturesque location and within easy reach of the city centre, this development is ideal for both growing families and young professional couples.

Want something cosy and contemporary? Don't compromise. With our Lincoln apartments, you get a spacious living room, fully kitted out open-plan kitchen and dining area, two beautiful double bedrooms and a family size bathroom with separate bath and shower.

Comfortable, and with plenty of up-to-the-minute features and appliances, our Lincoln apartments offer an expansive, homely feel. Energy efficient, there is quality flooring throughout, and top-notch security means you can enjoy peace of mind as well as comfort.

Deposit £1050
Unfurnished
Council Tax A
Available 8th January 2025



Ascend

Built on higher standards

0161 707 7584

192 Monton Road, Monton, Manchester, M30 9PY

monton.sales@ascendproperties.com,
monton.lettings@ascendproperties.com
www.ascendproperties.com



These particulars, whilst believed to be accurate are set out as a general outline only for guidance and do not constitute any part of an offer or contract. Intending purchasers should not rely on them as statements of representation of fact, but must satisfy themselves by inspection or otherwise as to their accuracy. No person in this firm's employment has the authority to make or give any representation or warranty in respect of the property